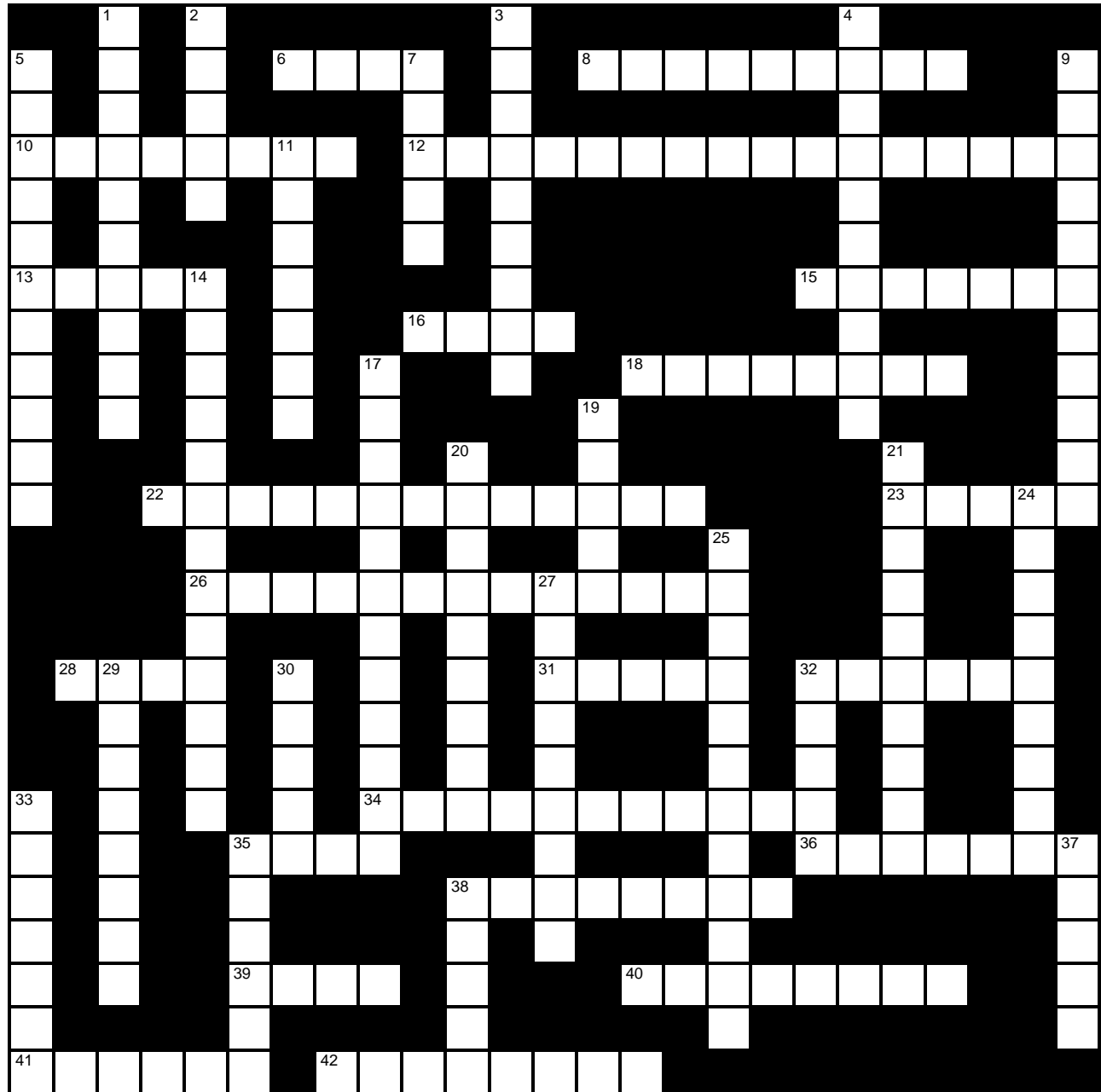
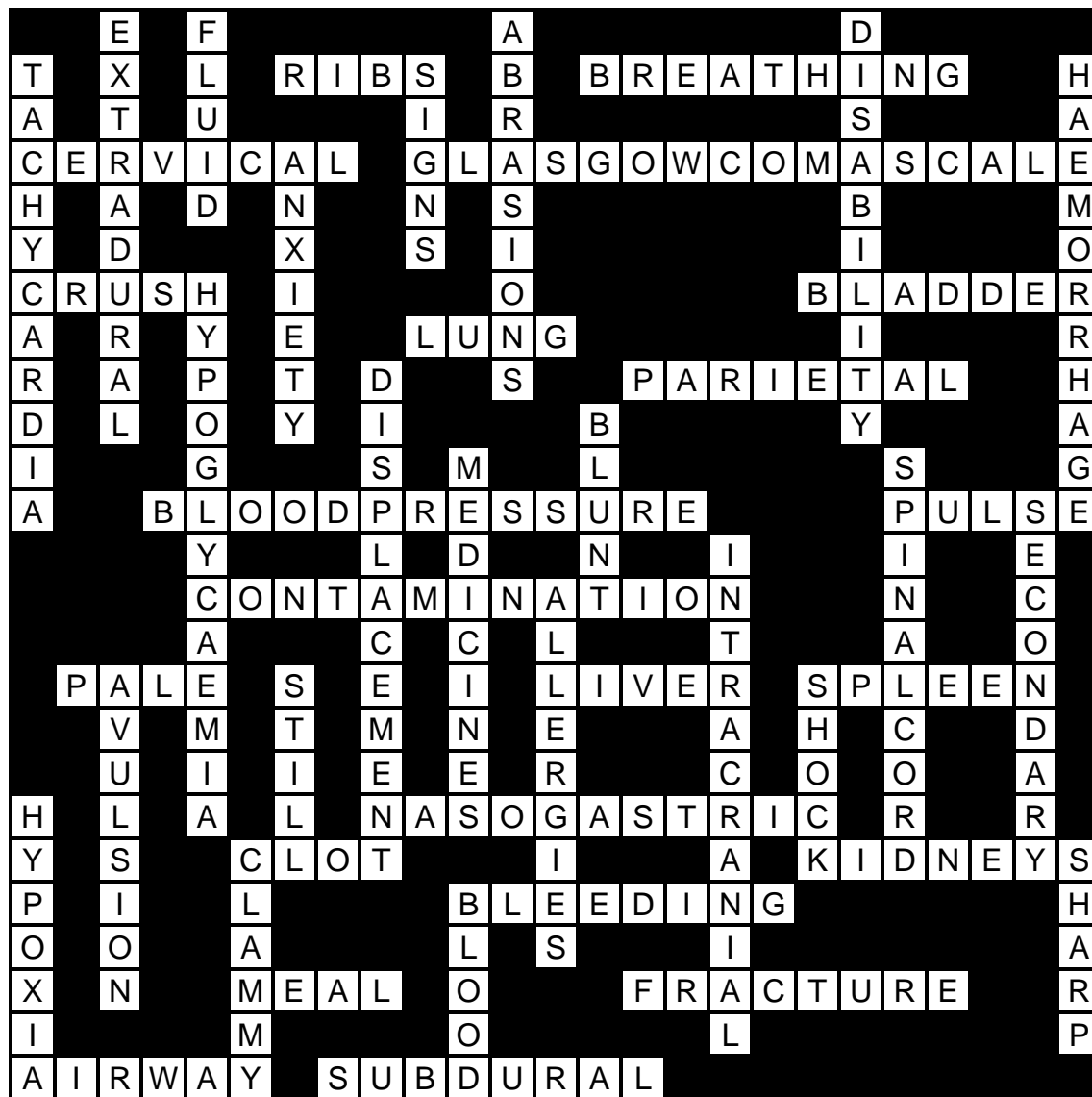


Trauma





Across

- 6 Displaced fracture of these can lead to pneumothorax (4)
- 8 The 'B' in trauma priorities (9)
- 10 The first 7 vertebrae (8)
- 12 G.C.S. (3 words) (16)
- 13 This sort of injury in a muscle can lead to rhabdomyolysis (5)
- 15 A storage organ in the pelvis (7)
- 16 This will collapse in a pneumothorax (4)
- 18 An outer membrane (8)
- 22 This must be adequate to perfuse tissues (2 words) (13)

Down

- 1 Above the dura mater (10)
- 2 Balance of this is important! (5)
- 3 Superficial wounds to the skin or mucous membrane (9)
- 4 The 'D' in A/E department priorities (10)
- 5 May develop in hypovolaemia (11)
- 7 Diagnostic information you perceive with your senses (5)
- 9 Bleeding (11)
- 11 Reducing this is therapeutic (7)
- 14 May occur as a result of insulin overdose (13)

- 23 May be fast, weak and thready in shock (5)
- 26 This would happen if bacteria enter a body cavity (13)
- 28 An unhealthy shade in shock (4)
- 31 Largest organ 'in' the body (5)
- 32 Organ in the left upper quadrant of the abdomen (6)
- 34 From the nose to the stomach (11)
- 35 A combination of fibrin and blood cells (4)
- 36 Two useful organs external to the peritoneal cavity (7)
- 38 Haemorrhage (8)
- 39 ...check when the last one was (4)
- 40 Any breach in the continuity of a bone (8)
- 41 Always your first priority (6)
- 42 Below the dura mater (8)
- 17 Abnormal positioning of anatomical structure (12)
- 19 Trauma which may lead to internal organ rupture (5)
- 20 The 'M' in S.A.M.P.L.E. (9)
- 21 Please keep this in tact (2 words) (10)
- 24 An injury which develops after the time of the traumatic event (9)
- 25 Within the skull (12)
- 27 The 'A' in S.A.M.P.L.E. (9)
- 29 Tearing away of a body part or structure (8)
- 30 A traumatised patient must be kept in this state (5)
- 32 Always prevent and treat within the 'golden hour' (5)
- 33 A common cause of secondary brain injury (7)
- 35 The skin may feel like this in shock (6)
- 37 Such objects may cause penetrating trauma (5)
- 38 ...do a PR to check if this is present (5)